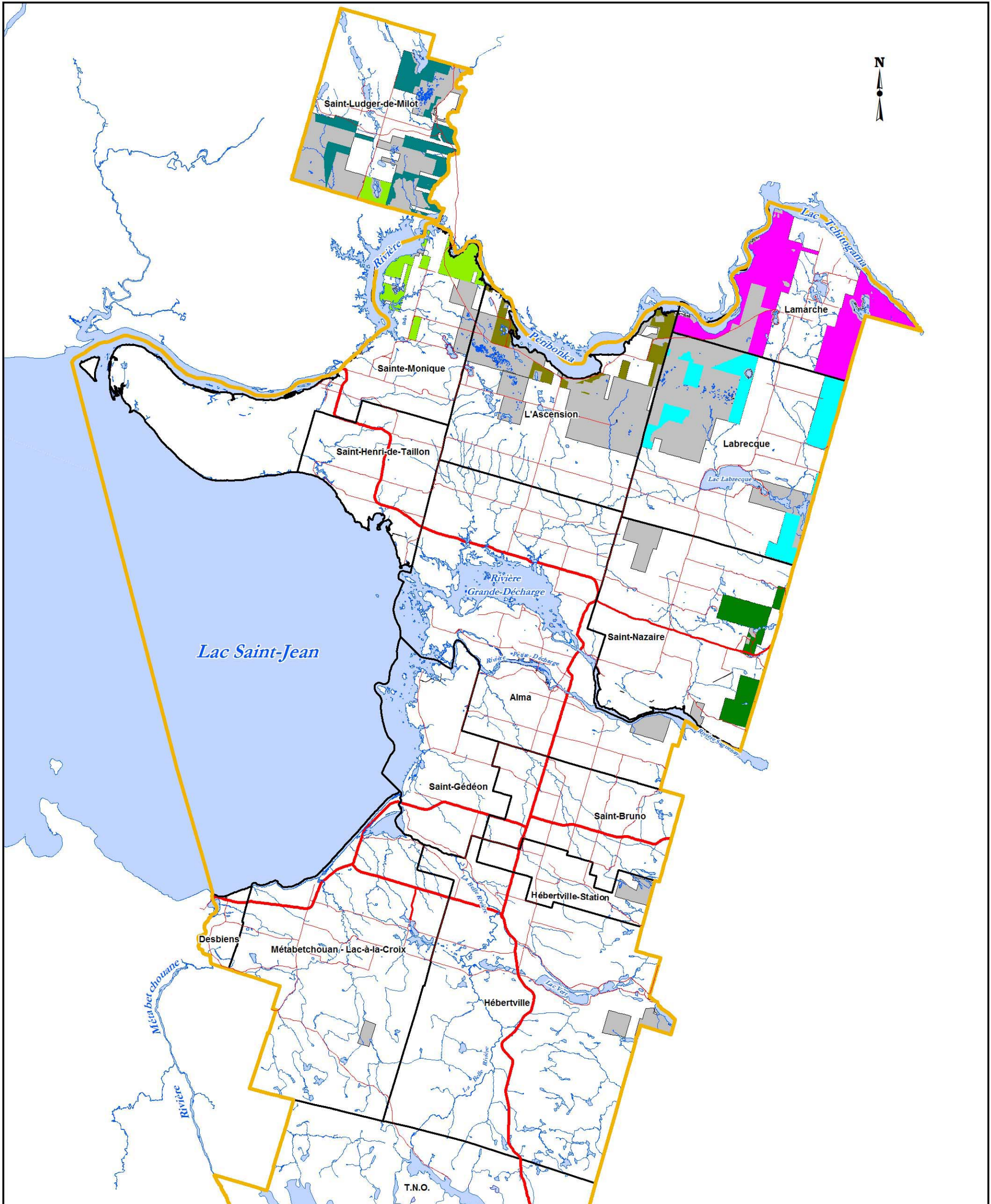


Bénéficiaires de convention d'aménagement du territoire forestier résiduel











Légende

Territoires sous convention d'aménagement du territoire forestier résiduel (CvATFR)

- | | |
|---|---|
|  2534-7824 Québec Inc. (Flore Bleue) |  Corporation de développement de Labrecque |
|  CODE SM (Corporation de développement de Sainte-Monique) |  9091-1264 Québec Inc (Foresterie 2-R) |
|  Corporation de développement de L'Ascension | |
|  Corporation de développement de Lamarche | |

Autres éléments

- | | |
|--|--|
|  Terres publiques intramunicipales hors convention (CvAF) |  Limite de la MRC |
|  Lac |  Route nationale |
|  Cours d'eau |  Route régionale |
|  Limite municipale |  Route locale |

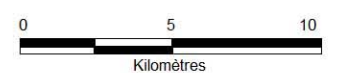
PAFIT 2017-2022



Réalisation: MRC de Lac-Saint-Jean-Est
Service d'aménagement

Date: Octobre 2017

Échelle: 1 : 250 000



Projection: Québec MTM Zone 7 (NAD 83)

Source: MRC de Lac-Saint-Jean-Est

Carte 2